



CONTRACTOR:	
PROJECT:	DATE:
PREPARED BY:	MODEL:

## DESCRIPTION

PJB - 3 & PJB - 5  
ELECTRICAL JUNCTION BOX FOR POOL/SPA LUMINAIRES  
CAPACITY: - PJB - 3 : UP TO 2 UNDERWATER LIGHTS  
PJB - 5 : UP TO 4 UNDERWATER LIGHTS



## DANGER!

**DANGER!** To Reduce the Risk of Injury:

Do not permit small children to operate pool/spa equipment or use the pool/spa unless they are closely supervised at all times. Always disconnect electricity before servicing the pool/spa equipment.

### IMPORTANT SAFETY INSTRUCTIONS

When installing and servicing this product and other associated equipment, basic safety precautions should always be followed,

1. Read and follow all instructions.
2. This junction box must be installed by a qualified person, according to National and local Electrical Codes.
3. Install this junction box not less than 48 inches from inside edge to pool. **USE COPPER CONDUCTORS ONLY.**
4. Do not exceed the maximum ratings of individual components, wiring devices, and current carrying capacity of conductors.
5. For grounding, bonding, installing and the wiring of underwater luminaires, refer to Article 680 of the National Electrical Code.

READ, FOLLOW AND SAVE THIS INSTRUCTION MANUAL.

## GENERAL INFORMATION

This polymeric, watertight, multi-fixture Junction Box is especially designed for pools, Pool-spa combinations and landscapes applications. It is very versatile, rugged and Simple to install. The Junction Box provides safe and reliable connections for up to four high or low voltage luminaires. It will accommodate flexible cords from #16-3 up to #12-3 and #10-2 in any combination and conduits from 1/2 to 1 inch, including the one for supply conductor feed.

A grounding bar accepts solid or stranded conductors from #16 to #8 gauge. An external bonding lug is also provided in case your installation requires it. An optional wall/post mounting bracket is available. The junction box complies with all the requirements of UL1241 and the National Electric Code.



APPLICATION AND PERFORMANCE SPECIFICATION INFORMATION IS SUBJECT TO CHANGE WITHOUT NOTIFICATION

11675 SW TOM MACKIE BLVD. | PORT ST. LUCIE, FL 34987 | P: 772.878.4944 | WWW.RPP-USA.COM

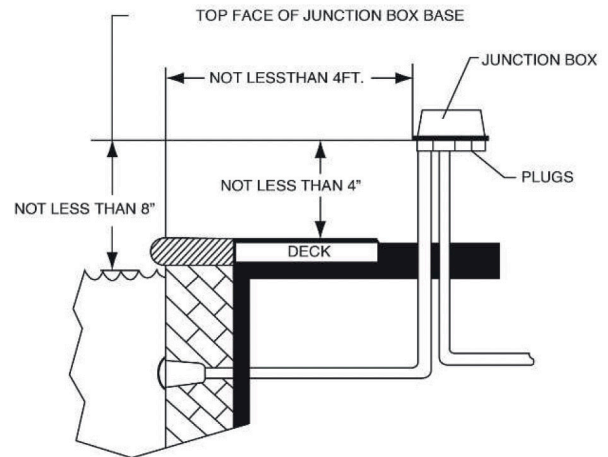


CONTRACTOR:	
PROJECT:	DATE:
PREPARED BY:	MODEL:

## INSTALLATION

A wiring layout should be prepared ahead of the installation of this Junction Box with considerations given to the following details.

1. Installation shall be according to Article 680 of the National Electric Code and all applicable local Codes. This Junction Box is suitable for either line or low voltage luminaires.
2. Use copper conductors only.
3. This Junction Box will accommodate water resistant flexible cord, #16/3 or #14/3 Extra-hard usage (Type SOW, STW or STOW) or, #12/3 or #10/2 hard usage (Type SJW, SJTW or SJTW0).
4. The Junction box must be rigidly supported and unused conduit openings permanently plugged with the plugs provided.



### INSTALLATION

Determine best location for the Junction Box and run properly sized conduits as per the wiring layout. The Junction Box shall be located not less than 4 feet from the inside wall of the pool. It must also be at least 8 inches above the maximum water level and not less than 4 inches above deck or grade. (See Illustration) Make sure the Junction Box can be rigidly supported. The optional mounting bracket can accommodate either wall or stake mounting.

2. Cut off all conduits at the same level. Use reducer bushings furnished as needed for installation. For 1/2 inch conduit, apply PVC Solvent Cement 1 inch down conduit and to small inside diameter of reducer bushing. Slide small end of reducer bushing over conduit to the stop tab. For 3/4 inch conduit, break the stop tab off of reducer bushing and PVC Solvent Cement large inside diameter of reducer bushing to conduit. PVC Solvent Cement large outside diameter of reducer bushings or 1 inch conduit to Junction Box base. Permanently close all unused conduit openings with the plugs provided.
3. An optional external bonding lug is provided. Connect to Equipotential Bonding Grid, if your installation requires it.
4. Pull supply conductors from source and flexible cord from luminaires into Junction Box. Use twist on wire connectors or other approved termination method for power connections. Connect ground conductors and bonding conductors, if required, to ground bar. Tighten terminal screws 35 in-lbs minimum.
5. Install strain reliefs. The direction that the clamps go on depends on the diameter of cable. For cables smaller than 1/2 inch (#16/3 or #12/3), install clamps with the arrow pointing up. Tighten screw evenly until clamp bottoms out. If required, make bonding connections to the grounding bar and to external bonding lug.
6. Check tightness of connections, make sure gasket is properly sealed and close the Junction Box with the screws provided.

PART CODE	IMS CODE
PJB-3	0628-8720
PJB-5	0628-8723



APPLICATION AND PERFORMANCE SPECIFICATION INFORMATION IS SUBJECT TO CHANGE WITHOUT NOTIFICATION

11675 SW TOM MACKIE BLVD. | PORT ST. LUCIE, FL 34987 | P: 772.878.4944 | WWW.RPP-USA.COM



CONTRACTOR:

PROJECT:

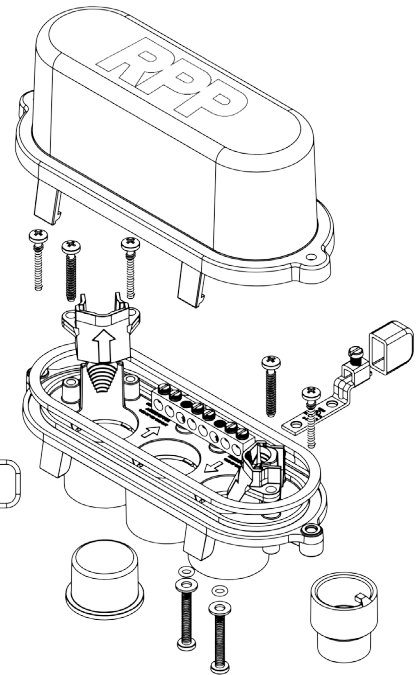
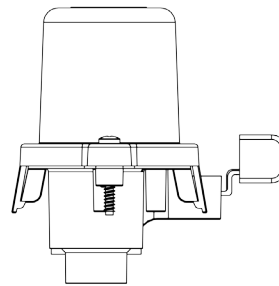
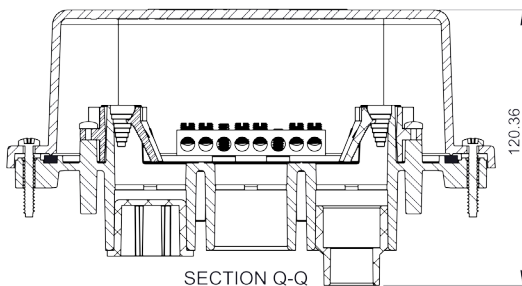
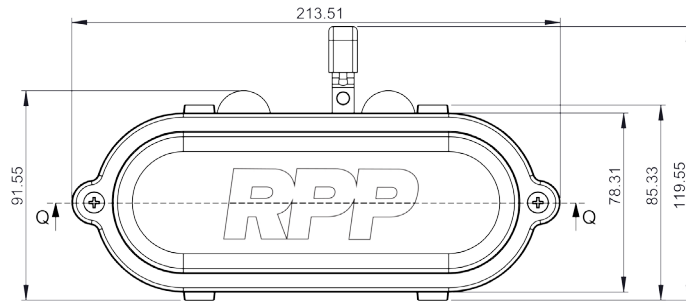
DATE:

PREPARED BY:

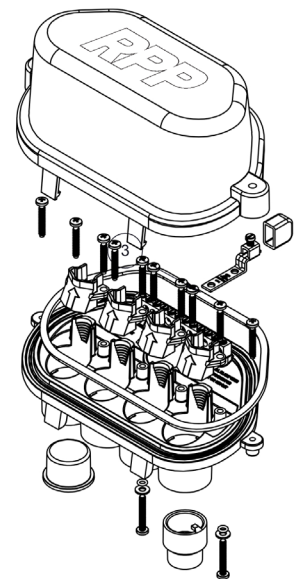
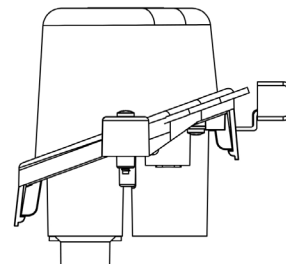
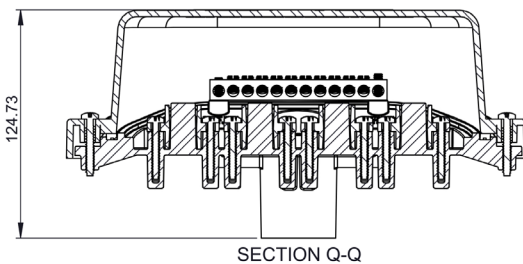
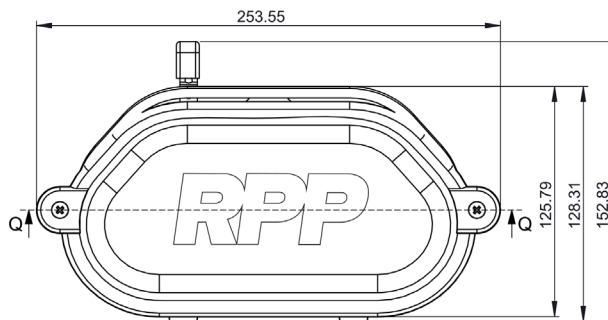
MODEL:

## LINE DRAWINGS

PJB-3



PJB-5



APPLICATION AND PERFORMANCE SPECIFICATION INFORMATION IS SUBJECT TO CHANGE WITHOUT NOTIFICATION

11675 SW TOM MACKIE BLVD. | PORT ST. LUCIE, FL 34987 | P: 772.878.4944 | WWW.RPP-USA.COM